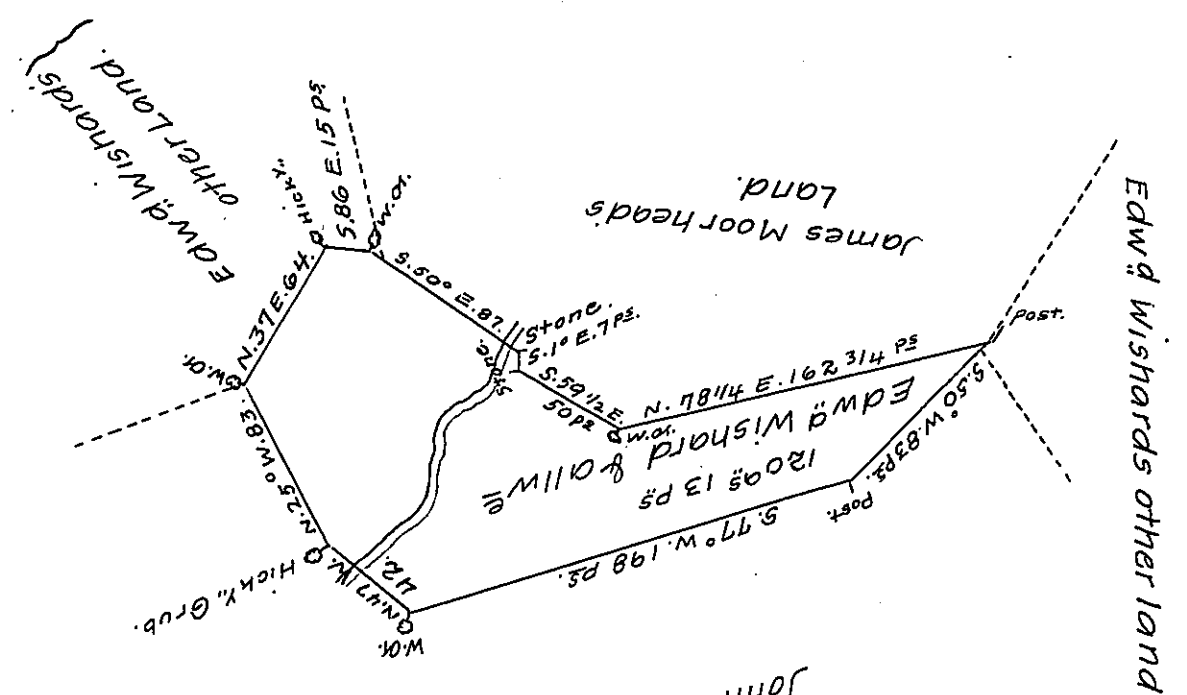


FORM NO. 1.



N.B. - this is part of ^{acres} 292 1/4 & allow.
 Survey'd on Wt of 20th Octo 1750
 to John Moorehead.

John Moochs Land

Feb'y., 11th 1786

Surveyed the above for Edw. Wishard by
 M^r. Hendersons order.

James Johnston

The above Draft describes a Part of a Tract of Land situate in
 now Washington
 Antrim, Township in the County of Franklin Containing one hundred
 & twenty Acres and 13 Perches and an Allowance of Six & Cent for Roads
 &c; the survey of which I think has been accurately made for Edward
 Wishard, who is to shew his Rights in order to obtain a Patent for the
 same.

Matt^r. Henderson, D.S.

To John Lukens Esq;
 Surveyor General.

IN TESTIMONY that the above is a copy of the original remaining on file in
 the Department of Internal Affairs of Pennsylvania, made
 comformably to an Act of Assembly approved the 16th day of
 February 1833, I have hereunto set my hand and caused
 the Seal of said Department to be affixed at Harrisburg,
 this sixth day of June, 1907.

Henry Houch
 Secretary of Internal Affairs.